



Vanuatu Dipatmen Blong Koreksional Sevis

Art Programme Calendar • Calendrier de programme d'art

**2012**

M LUN	30	2	9	16	23
T MAR	31	3	10	17	24
W MER		4	11	18	25
T JEU		5	12	19	26
F VEN		6	13	20	27
S SAM		7	14	21	28
S DIM	1	8	15	22	29

January

Januari

Janvier



M LUN	6	13	20	27	
T MAR	7	14	21	28	
W MER	1	8	15	22	29
T JEU	2	9	16	23	
F VEN	3	10	17	24	
S SAM	4	11	18	25	
S DIM	5	12	19	26	

February

Februare

Février



SAMSON  
MELIF

M LUN	5	12	19	26	
T MAR	6	13	20	27	
W MER	7	14	21	28	
T JEU	1	8	15	22	29
F VEN	2	9	16	23	30
S SAM	3	10	17	24	31
S DIM	4	11	18	25	

March

Maj

Mars



M LUN	30	2	9	16	23
T MAR		3	10	17	24
W MER		4	11	18	25
T JEU		5	12	19	26
F VEN		6	13	20	27
S SAM		7	14	21	28
S DIM	1	8	15	22	29

April

Eprel

Avril



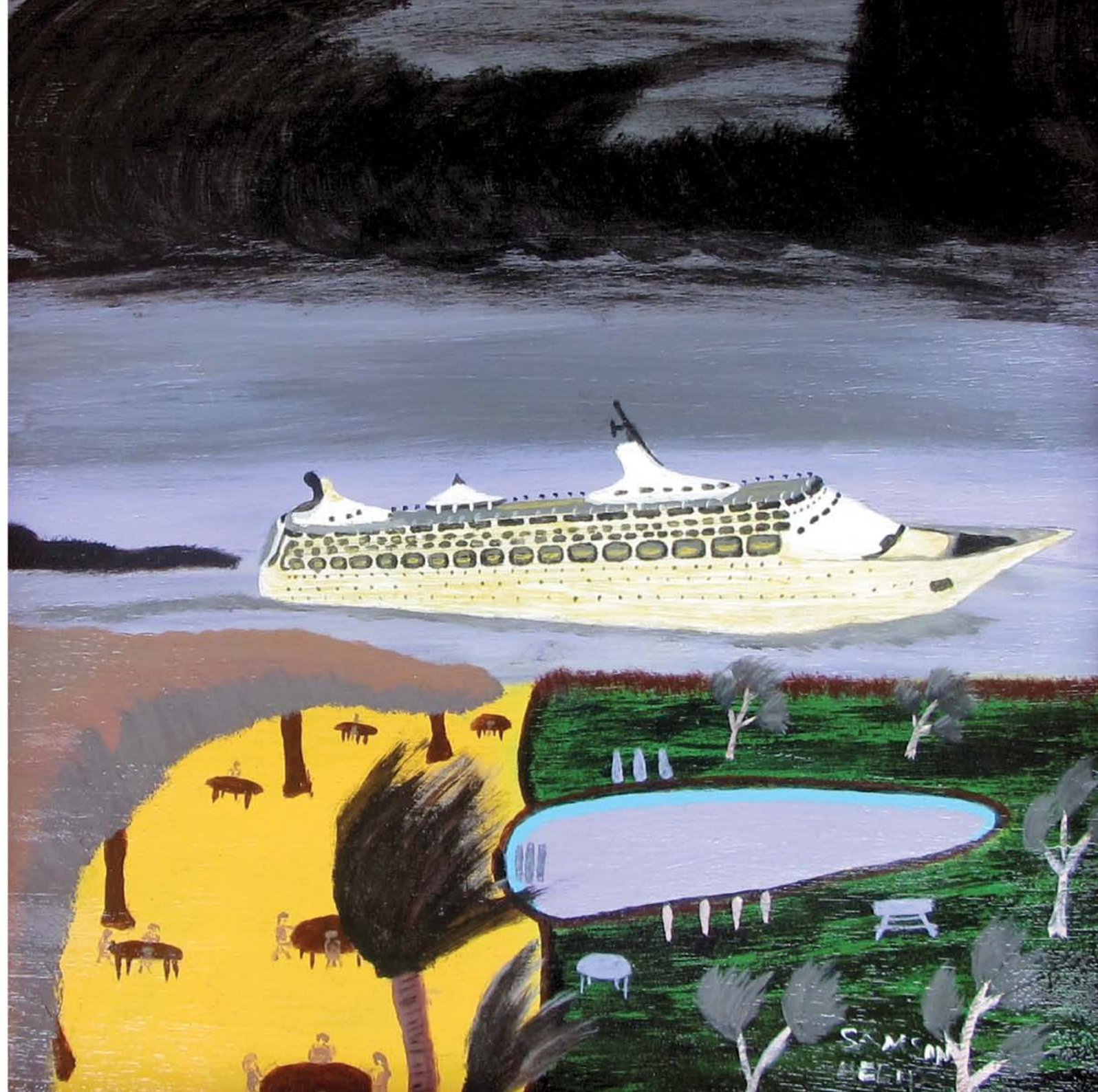
SERAPHIN  
SERAKE  
Vanuatu Correction

M LUN		7	14	21	28
T MAR	1	8	15	22	29
W MER	2	9	16	23	30
T JEU	3	10	17	24	31
F VEN	4	11	18	25	
S SAM	5	12	19	26	
S DIM	6	13	20	27	

May

Mei

Mai

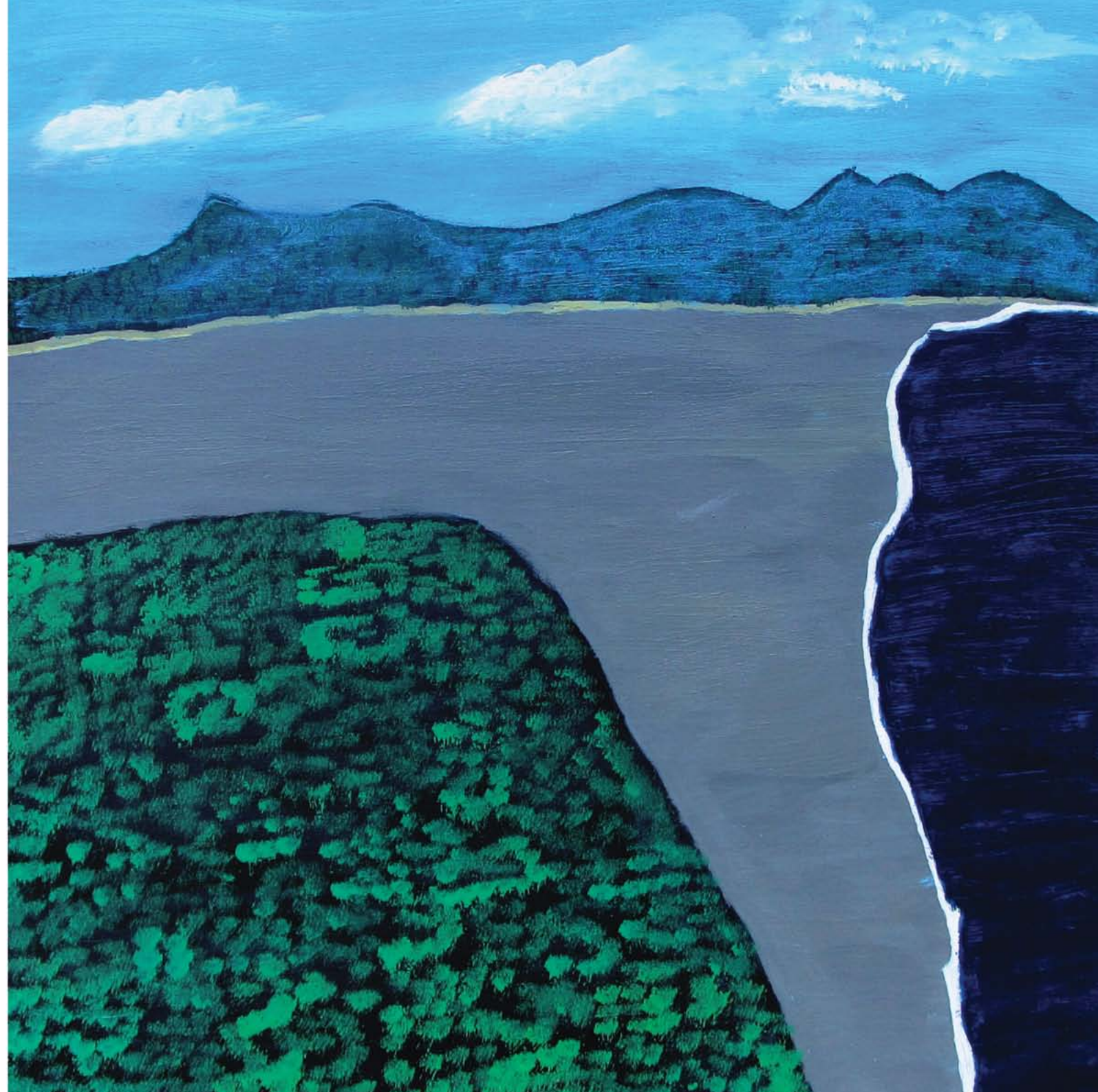


M LUN	4	11	18	25	
T MAR	5	12	19	26	
W MER	6	13	20	27	
T JEU	7	14	21	28	
F VEN	1	8	15	22	29
S SAM	2	9	16	23	30
S DIM	3	10	17	24	

June

Jun

Juin

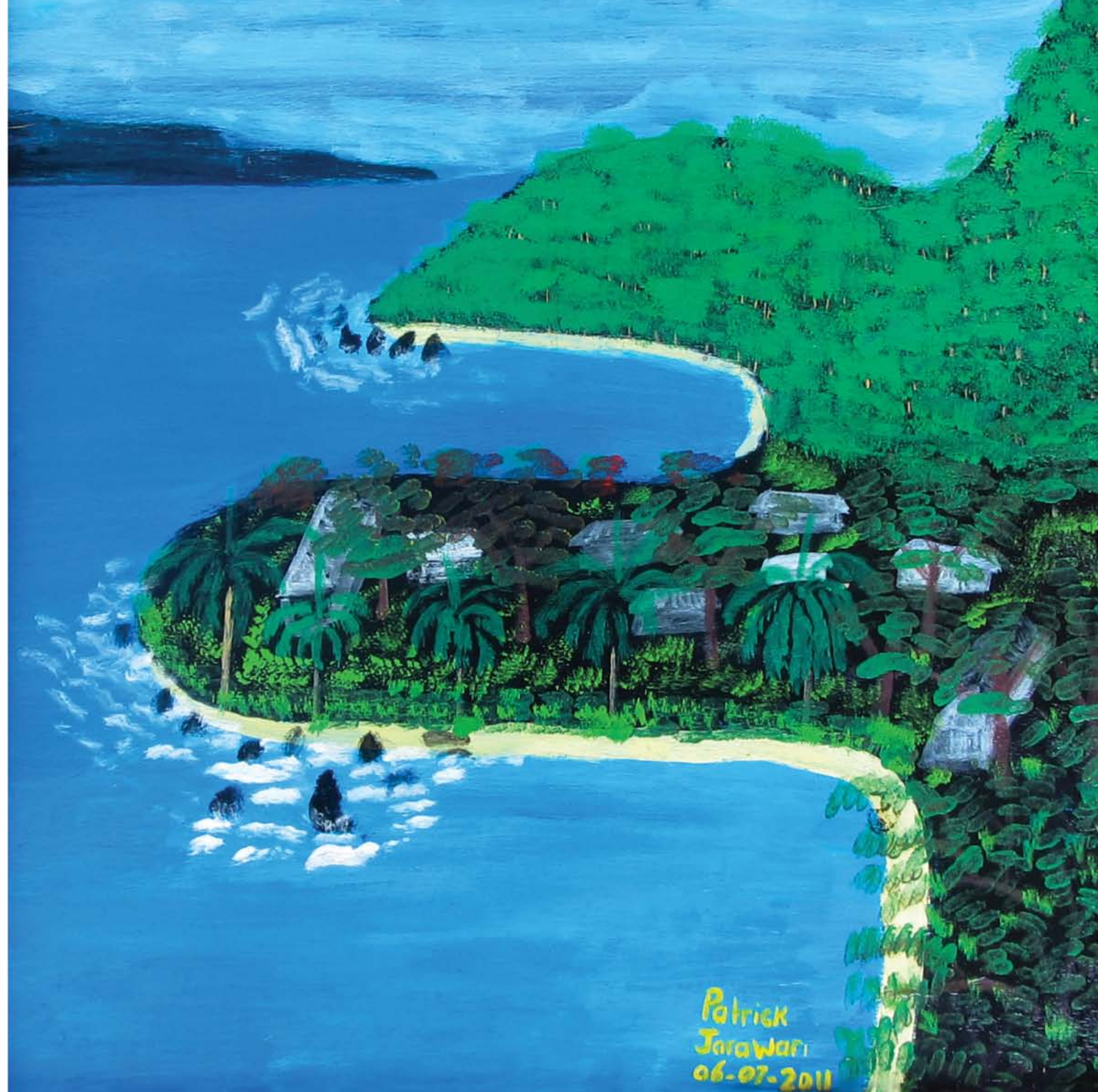


M LUN	30	2	9	16	23
T MAR	31	3	10	17	24
W MER		4	11	18	25
T JEU		5	12	19	26
F VEN		6	13	20	27
S SAM		7	14	21	28
S DIM	1	8	15	22	29

July

Julae

Juillet



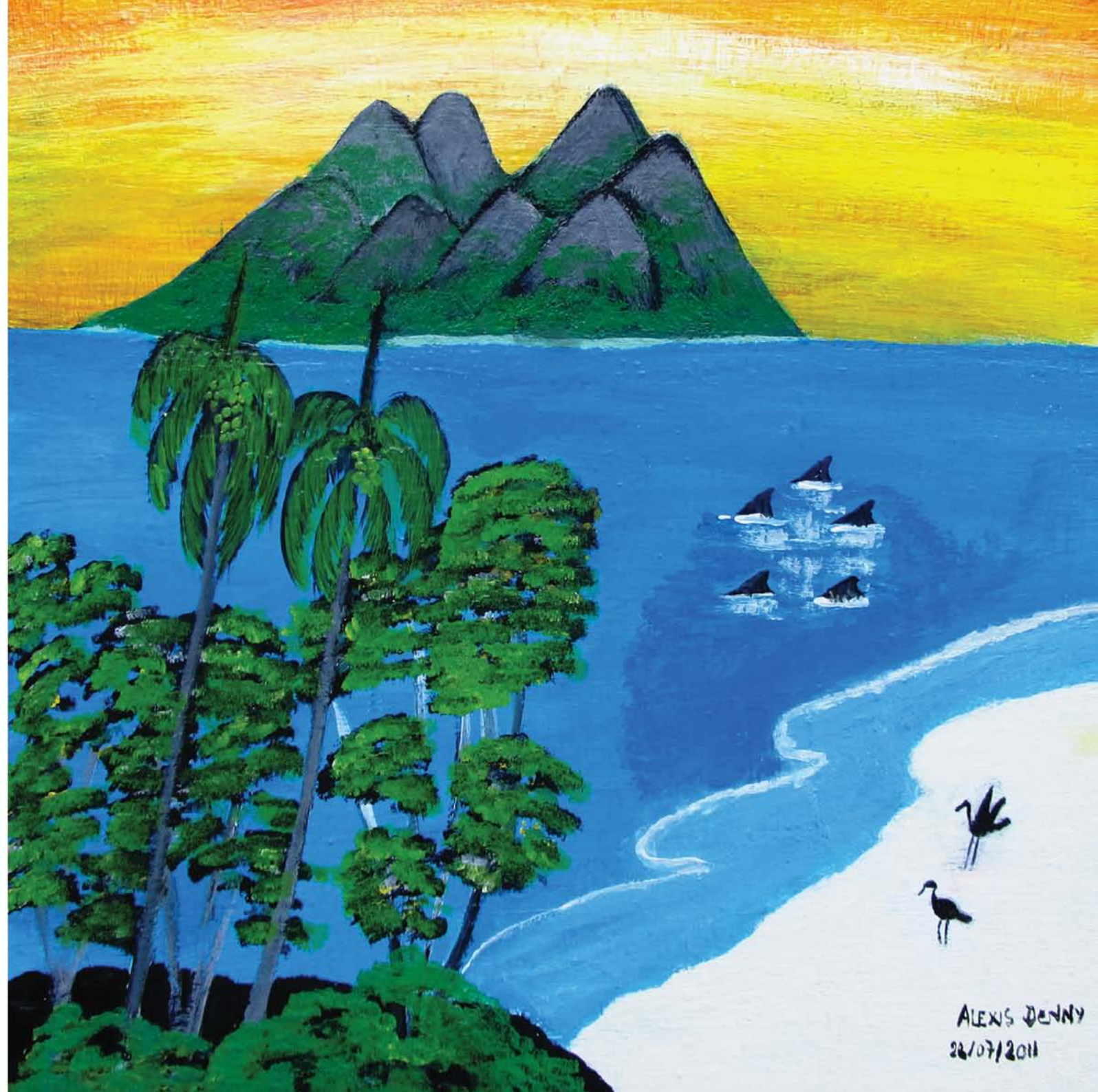
Patrick  
Jarawari  
06-07-2011

M LUN	6	13	20	27	
T MAR	7	14	21	28	
W MER	1	8	15	22	29
T JEU	2	9	16	23	30
F VEN	3	10	17	24	31
S SAM	4	11	18	25	
S DIM	5	12	19	26	

August

Okis

Août



ALEXIS DENNY  
26/07/2011

M LUN	3	10	17	24	
T MAR	4	11	18	25	
W MER	5	12	19	26	
T JEU	6	13	20	27	
F VEN	7	14	21	28	
S SAM	1	8	15	22	29
S DIM	2	9	16	23	30

September

Septemba

Septembre



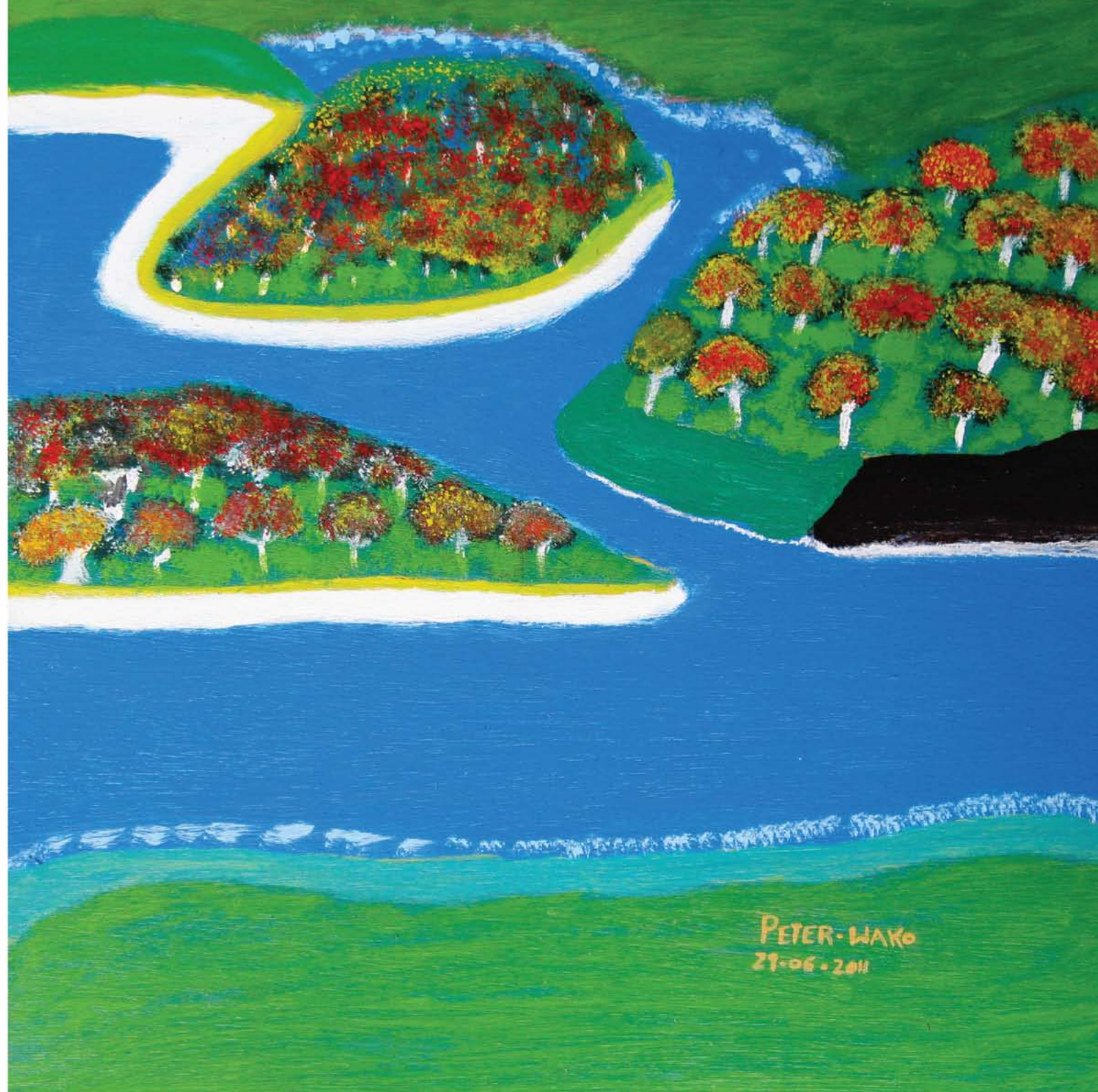
10/06/2011  
FRED LOWMAN

M LUN	1	8	15	22	29
T MAR	2	9	16	23	30
W MER	3	10	17	24	31
T JEU	4	11	18	25	
F VEN	5	12	19	26	
S SAM	6	13	20	27	
S DIM	7	14	21	28	

October

Oktoba

Octobre



PETER-WAKO  
21-06-2011

M LUN	5	12	19	26	
T MAR	6	13	20	27	
W MER	7	14	21	28	
T JEU	1	8	15	22	29
F VEN	2	9	16	23	30
S SAM	3	10	17	24	
S DIM	4	11	18	25	

November

Novemba

Novembre



Patrick  
Taraori  
27-29-60

M LUN	31	3	10	17	24
T MAR		4	11	18	25
W MER		5	12	19	26
T JEU		6	13	20	27
F VEN		7	14	21	28
S SAM	1	8	15	22	29
S DIM	2	9	16	23	30

December

Disemba

Décembre



## REHABILITATION PROGRAMMES AT STADE, MEN'S LOW RISK CORRECTIONAL CENTRE IN PORT VILA

The Dipatman Blong Koreksenol Servis maintains a humane, just and effective corrections system. The legislation that established the Dipatman makes special reference to the need for offender rehabilitation and reintegration into society. A wide range of programmes is offered to detainees and run with input and involvement from the community. Helping offenders progress towards a more positive life plays a key part in creating a safer community for all the citizens of Vanuatu.

As part of the Programme of Rehabilitation and Reintegration, the woodworking team and art group produce unique items for sale to the community. All profits go back into the programme to help fund tools and materials.

Other rehabilitation programmes include traditional carving, gardening, music, devotional services and bible studies, building and renovations.



*Sefti, digniti mo gud fasin  
blong evriwan*



## ART PROGRAMME AT THE THE WOMEN'S CORRECTIONAL CENTRE IN PORT VILA

The success of the art programme at Stade Low Risk facility led to a similar programme being established at the Women's Correctional Centre in 2011.

The women do portrait painting, still life drawing and fabric dyeing.

Collaborative projects include painting cut-out fish which decorate the gate of the prison. They are also made into mobiles and many of the fish have been sold. Proceeds are channelled back into the programme to fund materials.

Community projects include a brightly coloured mural of Noah's Ark painted in the pikinini playroom at Vanuatu Centre for Disabled People, banners produced for community sports events and mobiles for church groups.



*Sefti, digniti mo gud fasin  
blong evriwan*

## ART REHABILITATION PROGRAMME

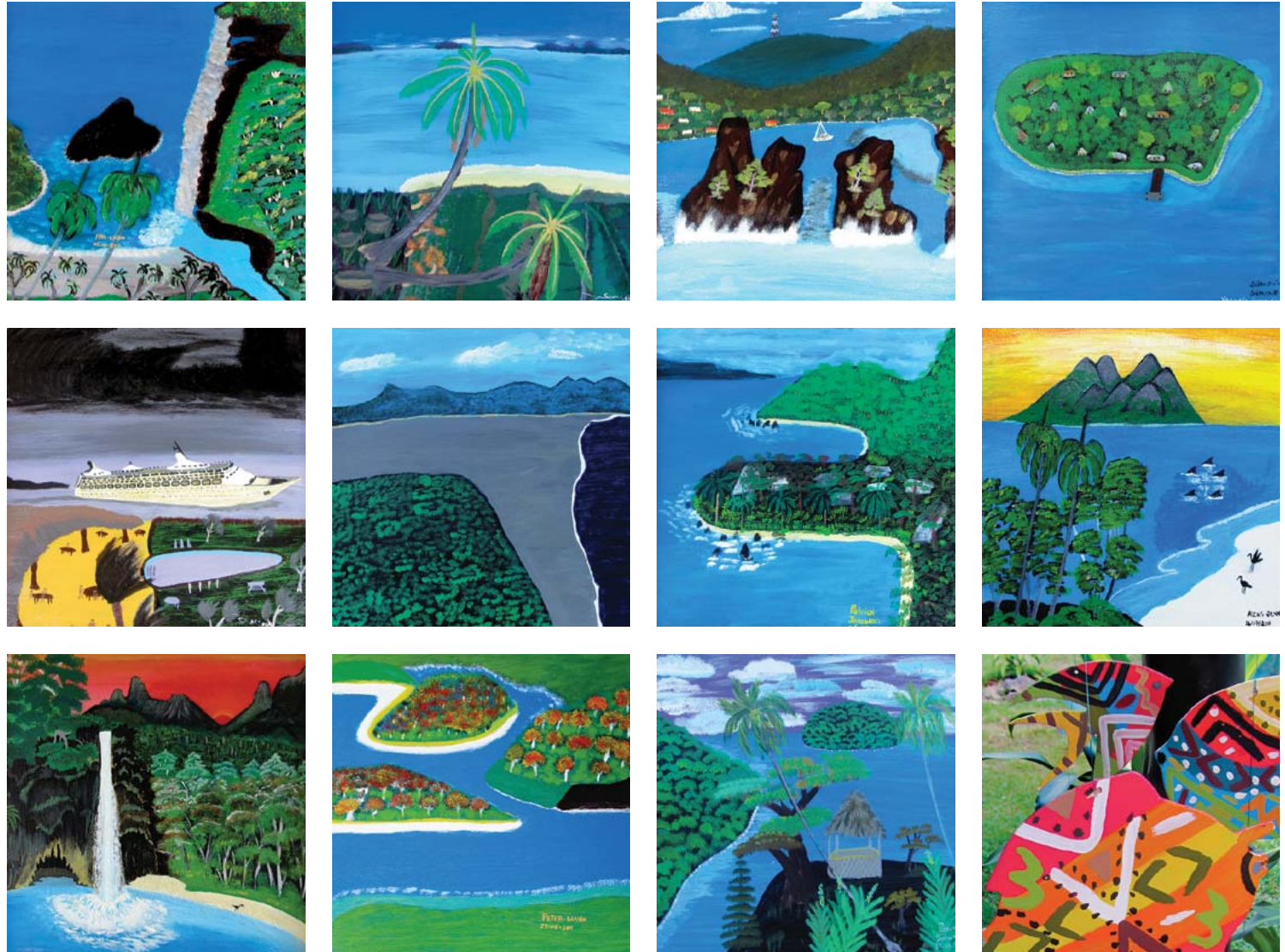
The Art Programme is one of a number of rehabilitation programmes run at Stade, Port Vila's Men's Low Risk Correctional Facility. The right to attend the programme is an earned privilege with a core group of between five and ten detainees painting regularly.

Paintings are done on plywood using house paint and then varnished. Typically they are around 40 x 40 cm in size and many are framed.

Some of the paintings featured in this calendar have been sold. The group paints every day and there is a constant supply of new artworks for sale. They can be viewed at the office of the Department of Correctional Services in Port Vila. All proceeds go towards funding the programme. For more information ring the Department on (00678) 23263



*Sefti, digniti mo gud fasin  
blong evriwan*



*Funded by the  
New Zealand  
Aid Programme*



Katy Buess, a VSA volunteer, worked as Art Programme Advisor at Stade Correctional Centre from 2008 to 2009. Keith Hambrook took up the position in March 2010. These paintings were produced by the Art Group in 2011.

*Calendar design by Dianne Hambrook, a VSA volunteer assigned as a Graphic Design Advisor at Wan Smolbag Theatre in Port Vila.*

